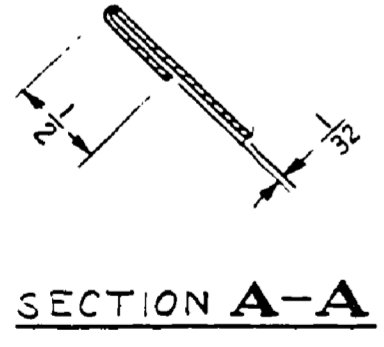
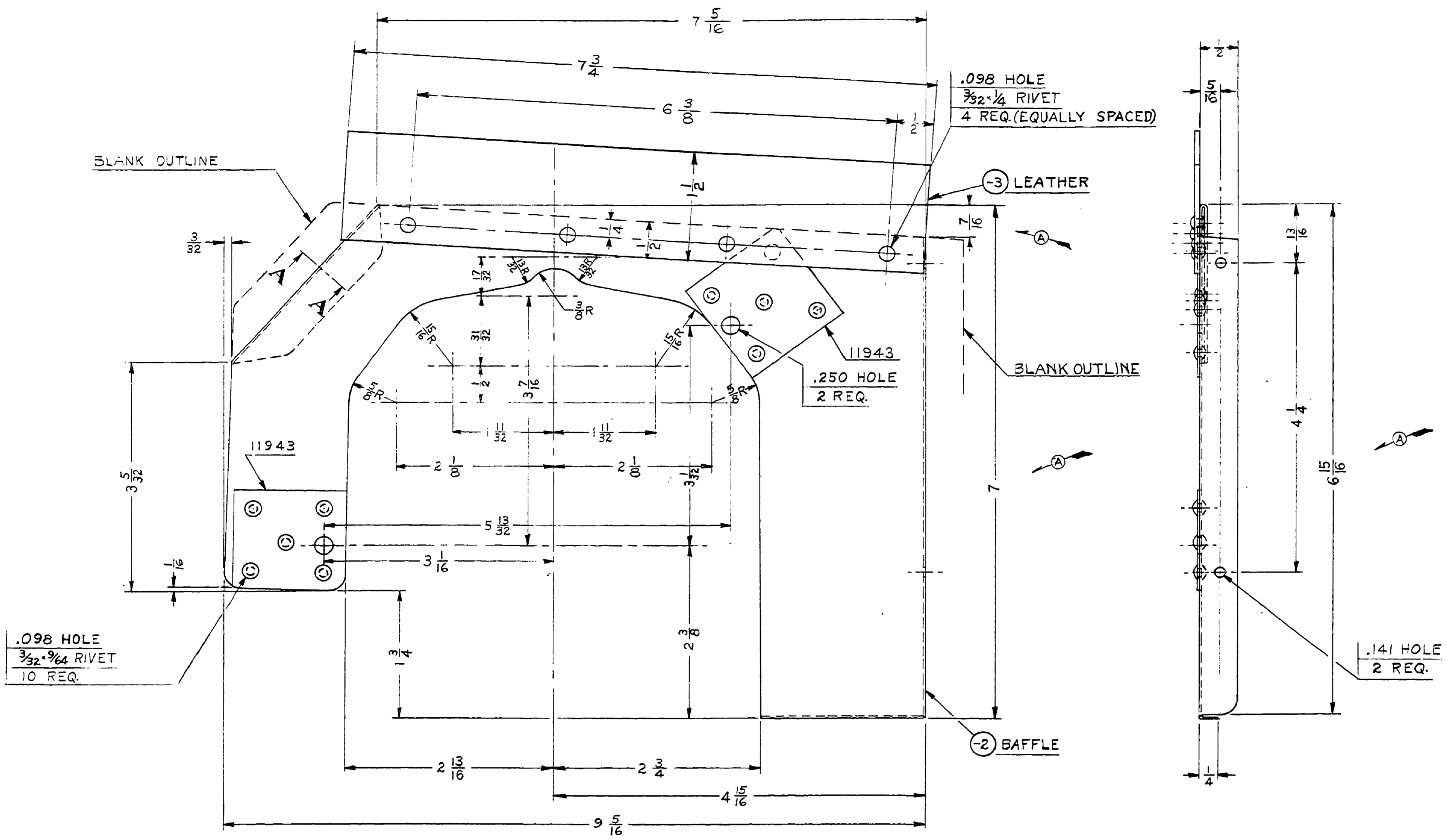


A

A



	10	3/32 x 3/64 L.	STL. TUBULAR CAD. PL. RIVET
	4	3/32 x 1/4 L.	2S ALUM. BR. HD. RIVET
11943	2		REINFORCEMENT
-3	1	1/6 x 1/2 x 7 3/4	GENUINE LEATHER #1 MB.
-2	1	.032 x 7 3/8 x 9 13/16	3S-1/2 H. ALUM.
		SIZE	DESCRIPTION
			MATERIAL
			TOTAL WT.-LBS.
SCALE FULL SIZE			
FINISH-PIPER SPECIFICATION #10			
MANUFACTURING PRACTICES-PIPER SPECIFICATION #9			
BAFFLE ASSEMBLY-ENGINE LEFT SIDE REAR			
		C. E. K.	H. R. K.
		6-8-49	6-16-49
		DRAFTSMAN	CHECKER
		STANDARDS	
			12427

THIS DRAWING IS THE PROPERTY OF THE PIPER AIRCRAFT CORP. AND ITS POSSESSION BY UNAUTHORIZED PERSONS SHALL NOT BE CONSTRUED AS PERMISSION TO REPRODUCE FOR SALE, IN WHOLE OR IN PART, ANY DEVICES SHOWN THEREON.				
MODEL	PER PLANE	NEXT ASSEMBLY	SUPSEDES	SUP. BY
PIPER AIRCRAFT CORP. LOCK HAVEN, PENNA.				
A	7/25/46	5/6 WAS 7/16 DIM. ADDED	11-10-50	HRK
LET.	REVISION	DATE	BY	

A751