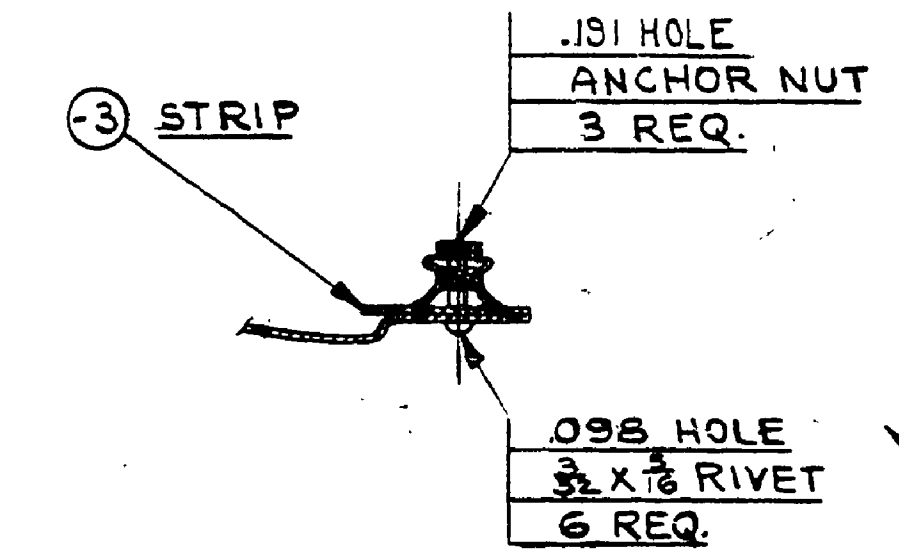
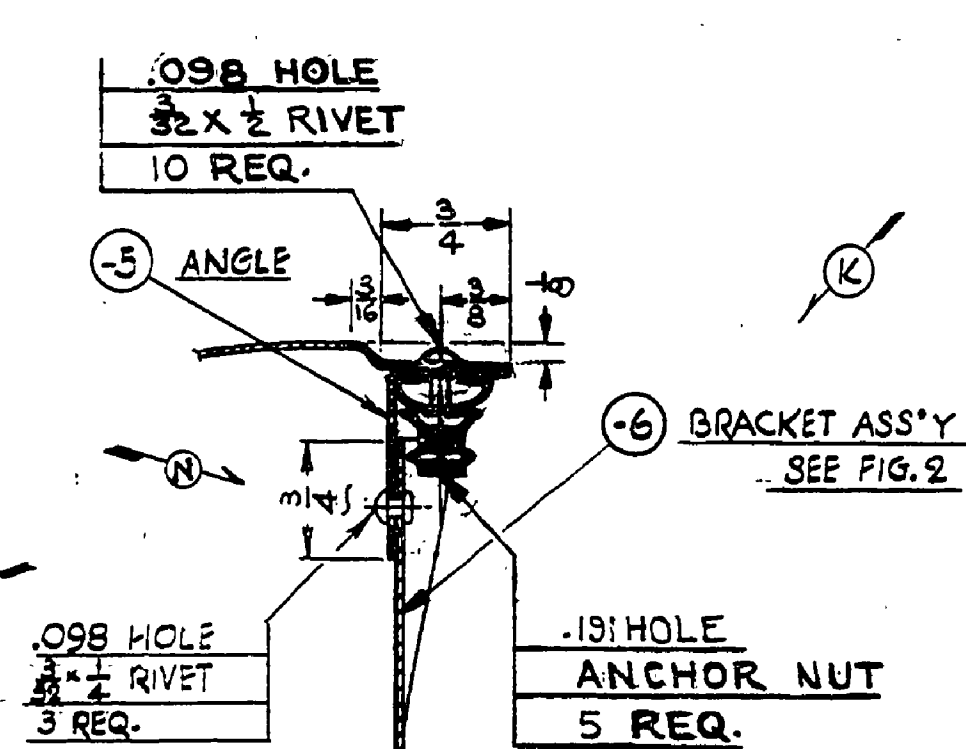
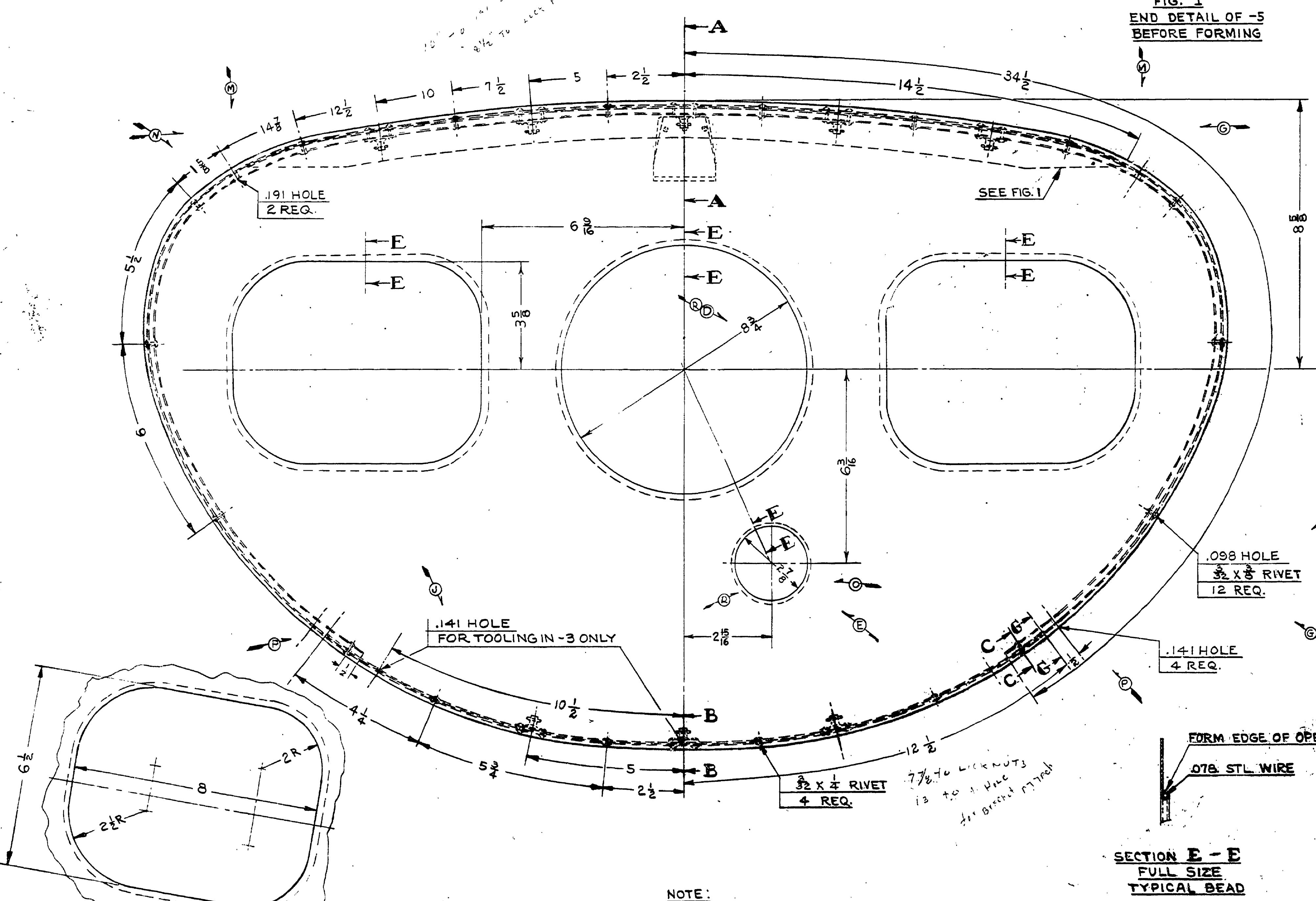
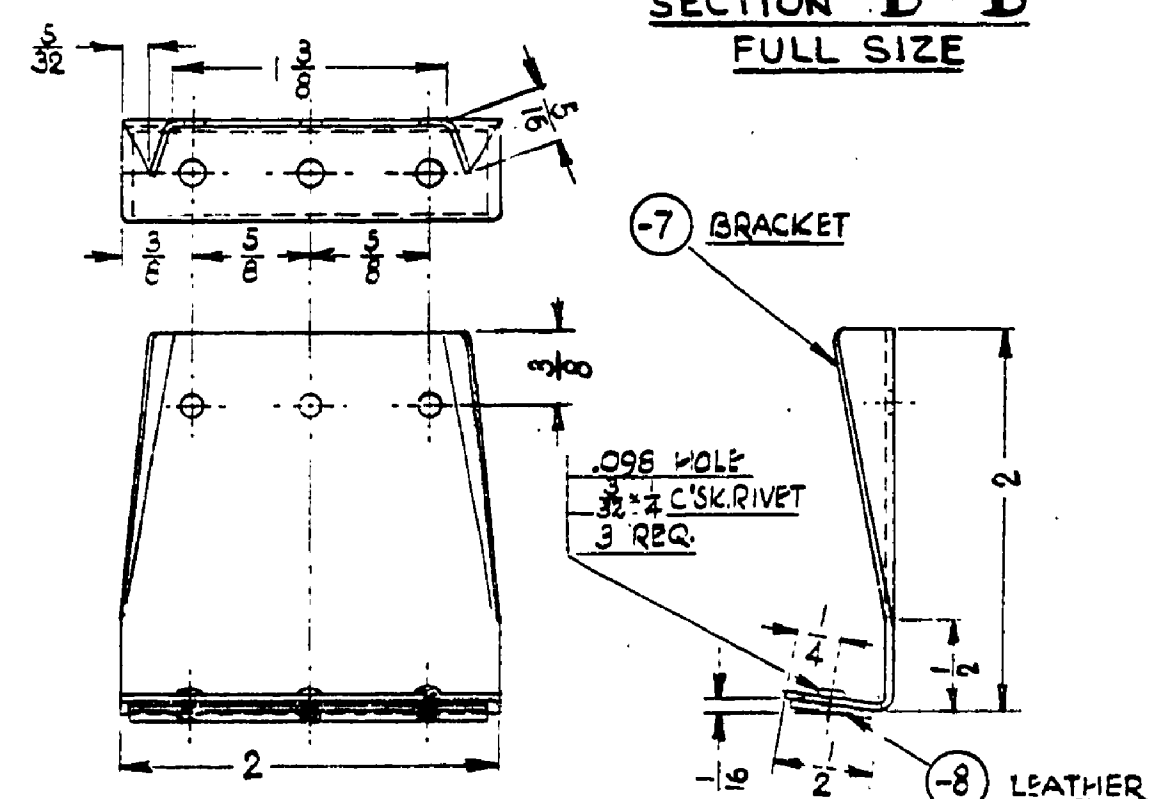
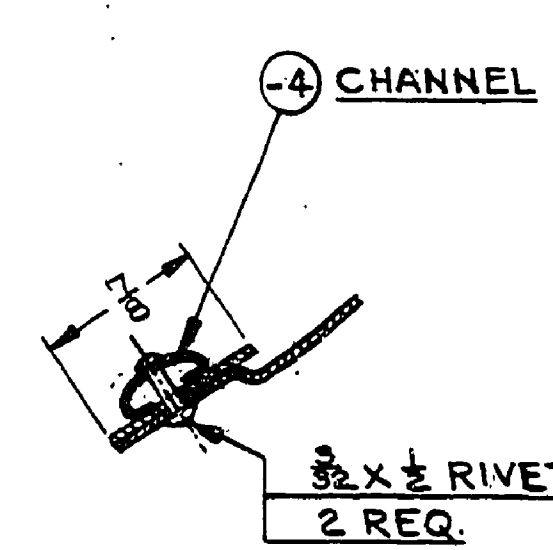


FIG. 1  
END DETAIL OF -5  
BEFORE FORMING



SECTION A-A  
FULL SIZE

SECTION B-B  
FULL SIZE



SECTION C-C  
FULL SIZE

SECTION D-D  
FULL SIZE

FIG. 2  
DETAIL OF -6 (BRACKET ASS'Y)

3	3/32 x 1/4 LG	25-0 ALUM. CSK. HD. RIVETS	
-8	1/16 x 1/8	LEATHER	
-7	.032 x 2-2 1/2	9S 1/2 H. ALUM.	
-6		SUBASSY CONSISTS OF -7, -8 AND 3 3/4\"/>	
84521		CHANNEL SECTION	
6	3/2 x 1/2 LG.	25-0 ALUM. BR. HD. RIVETS	
8	ANCHOR NUT #N25E 1032	ANCHOR NUT	
1	.078 DIA. x 84 L.	#1010 CP. STL. WIRE	
12	3/2 x 1/2 LG.	25-0 ALUM. BR. HD. RIVETS	
12	3/2 x 1/2 LG.	25-0 ALUM. BR. HD. RIVETS	
7	3/2 x 1/2 LG.	25-0 ALUM. BR. HD. RIVETS	
10192		NOSE COWL CONTOUR	
-5	1	032 x 1 1/2 x 29	3S-1/2 H. ALUM.
-4	1	69 LONG	PIPER SECT. 84521
-3	1	040 x 3 1/2 x 2 1/2	52 S-2 H. ALUM.
-2	1	040 x 34 x 4 1/4	3S-0 ALUM.

R	8 WAS 2 1/2 x 2 1/2 WAS 2 1/2 x 2 1/2	9-3-47 RC
G	INSEC. A-R-B-B DIMPLES REM. 11-15-47 HIZ	
F	4 .141 HOLES SEC. G. 600	8-26-44 LM
O	2 3/8 DIA. WAS 2 x 2 1/2 HOLE	8-26-44 LM
N	14 7/8 WAS 15 1/8 WAS 15 3/8 WAS 15 7/8	7-19-44 CEK
M	2 ANCHOR NUTS 25-0	7-19-44 CEK
L	1 1/2\"/>	
K	-7, -8 AND SUBASSY	6-6-44 RSC
J	-6 ADDED	
I	.141 HOLES ADDED IN -3 ONLY	3-2-45 RPP
H	.098 HOLE REF. ADDED	3-14-45 RPP
G	1 1/2\"/>	
F	1033A-14 REMOVED	3-8-45 CEK
E	VIEWS REVISED	3-3-45 CEK
D	8 WAS 7 WAS 7 1/2 WAS 7 1/2	2-5-45 RPP
C	1 1/2\"/>	
B	1033A-14	1-13-45 RPP
A	1033A-14	1-13-45 RPP
REV	REVISION	0478. UV

FINISH-PIPER SPECIFICATION #10	
MANUFACTURING PRACTICES-PIPER SPECIFICATION #9	
SCALE 6\"/>	
COWL ASSEMBLY-ENGINE NOSE	
DATE	10-28-33
DRAWN BY	10-22-33
CHECKED BY	
STANDARD	

PIPER AIRCRAFT CORP.  
LOCK HAVEN, PENNA.

10189